

Our Lady of the Lake Children's Hospital
Pediatric Emergency Department
Chris Woodward DO

Fever Guidelines Revised 4/11/22

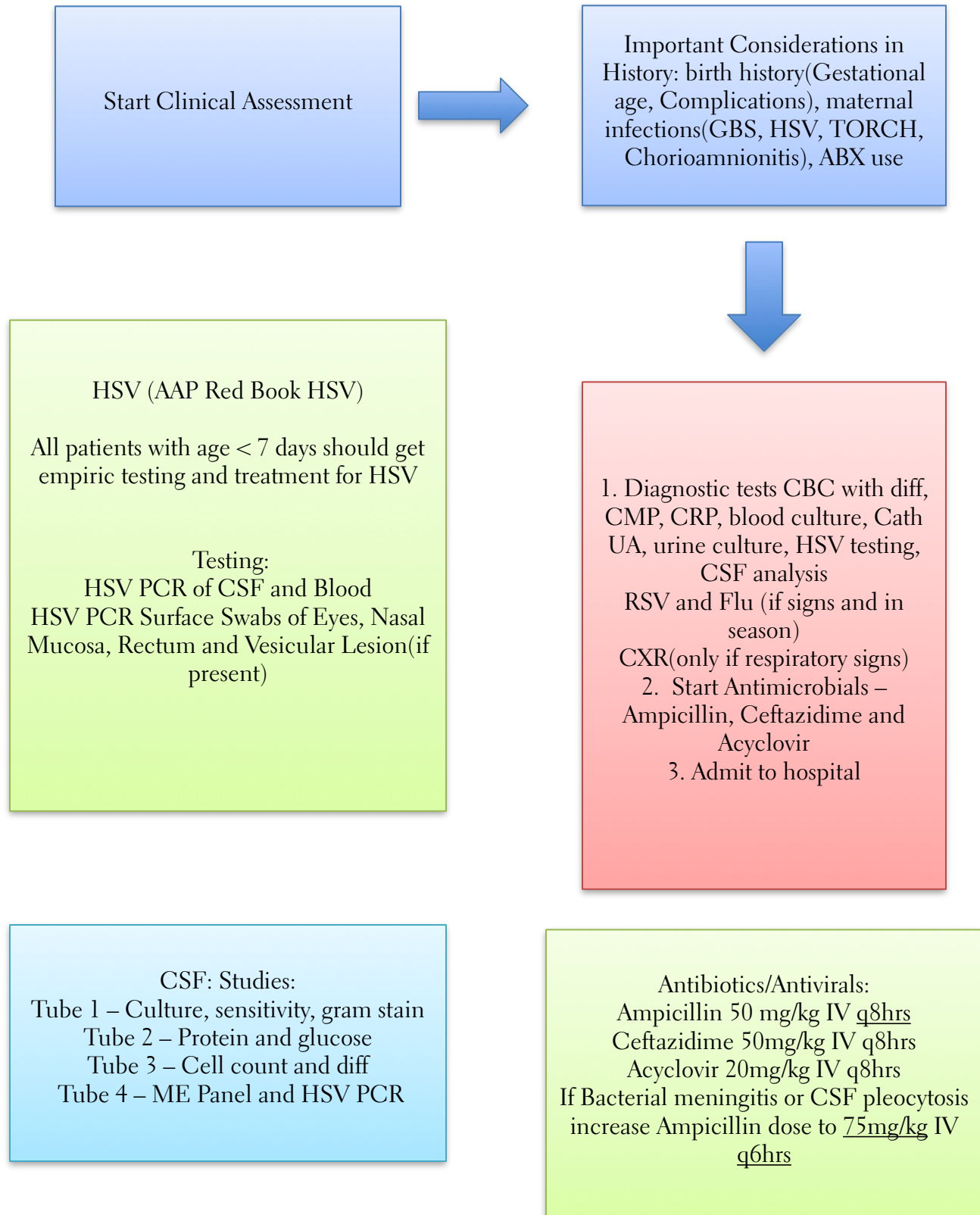
Purpose: These fever guidelines have been proposed using current Children's Hospital practice and the best available evidence. They will serve as a guide for physicians and residents when working in the Emergency Department evaluation pediatric fever. The guidelines were not designed to encompass every situation; therefore divergence is possible and encouraged if needed. They were designed to only include testing that has benefit for the patient.

The age categories differ then previous published guidelines, which were based on evidence collected prior to HIB and Prevnar Vaccines. The new age categories are broken at the timing of 1st and 2nd rounds of immunizations. If a patient is late or not vaccinated, allowances must be made for appropriate testing.

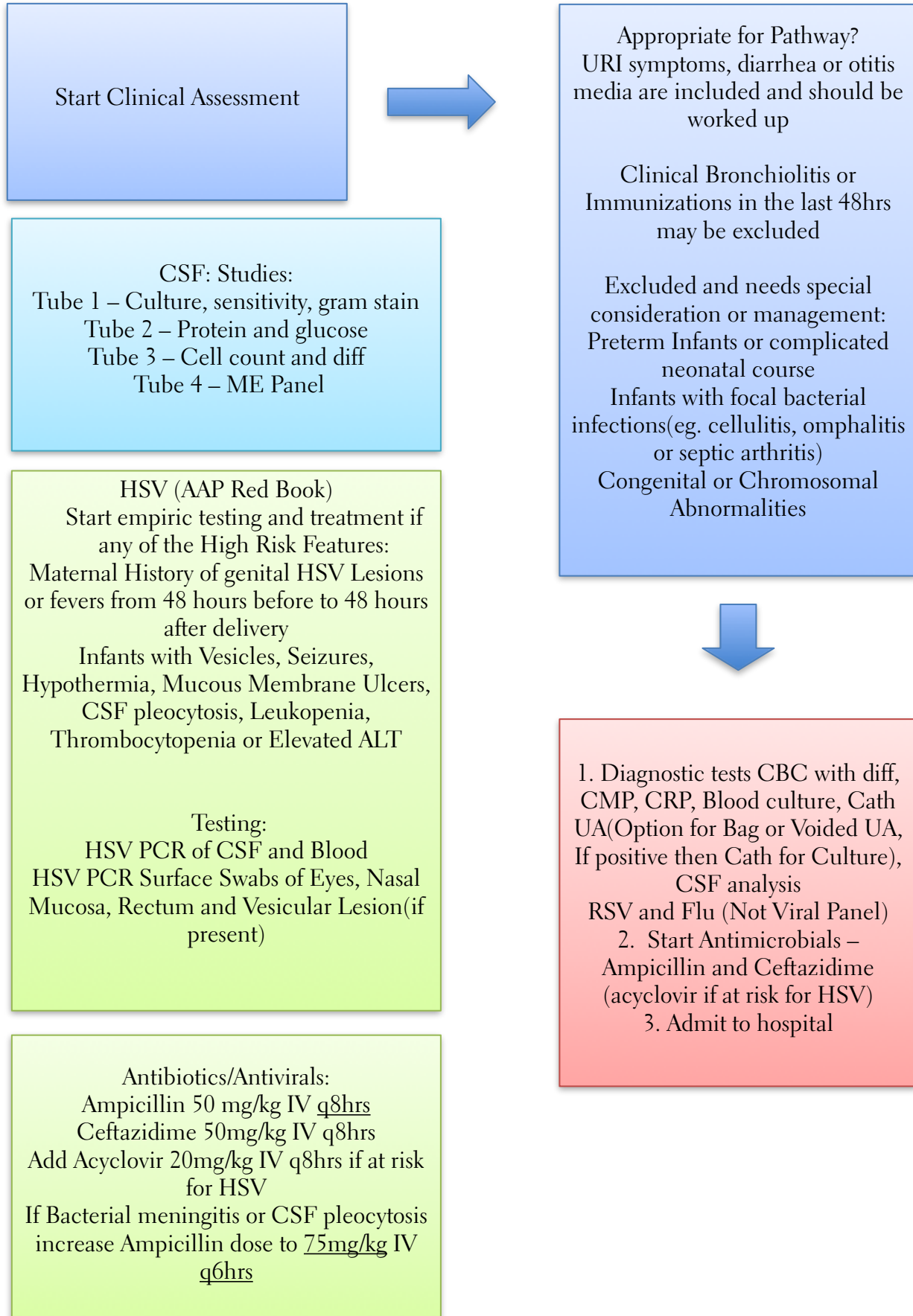
References:

1. Aronson PL. Evaluation of the febrile young infant: an update. *Pediatr Emerg Med Pract.* 2013;10(2):1-17.
2. Baker MD, Bell LM, Avner JR. Outpatient management without antibiotics of fever in selected infants. *N Engl J Med.* 1993;329(20):1437-41.
3. Carroll WL, Farrell MK, Singer JI, Jackson MA, Lobel JS, Lewis ED. Treatment of occult bacteremia: a prospective randomized clinical trial. *Pediatrics.* 1983;72(5):608-12.
4. Hsiao AL, Chen L, Baker MD. Incidence and predictors of serious bacterial infections among 57- to 180-day-old infants. *Pediatrics.* 2006;117(5):1695-701.
5. Huppler AR, Eickhoff JC, Wald ER. Performance of low-risk criteria in the evaluation of young infants with fever: review of the literature. *Pediatrics.* 2010;125(2):228-33.
6. Levine DA, Platt SL, Dayan PS, Macias CG, Zorc JJ, Krief W, et al. Risk of serious bacterial infection in young febrile infants with respiratory syncytial virus infections. *Pediatrics.* 2004;113(6):1728-34.
7. Martinez E, Mintegi S, Vilar B, Martinez MJ, Lopez A, Catediano E, et al. Prevalence and predictors of bacterial meningitis in young infants with fever without a source. *Pediatr Infect Dis J.* 2015;34(5):494-8.
8. Pantell RH, Roberts KB, Adams WG, Dreyer BP, Kuppermann N, O'Leary ST, et al. Evaluation and Management of Well-Appearing Febrile Infants 8 to 60 Days Old. *Pediatrics.* 2021.
9. Roberts KB, Downs SM, Finnell SME, Hellerstein S, Shortliffe LD, Wald ER, et al. Urinary Tract Infection: Clinical Practice Guideline for the Diagnosis and Management of the Initial UTI in Febrile Infants and Children 2 to 24 Months. *Pediatrics.* 2011;128(3):595-610.
10. Scarfone R, Murray A, Gala P, Balamuth F. Lumbar Puncture for All Febrile Infants 29-56 Days Old: A Retrospective Cohort Reassessment Study. *J Pediatr.* 2017.

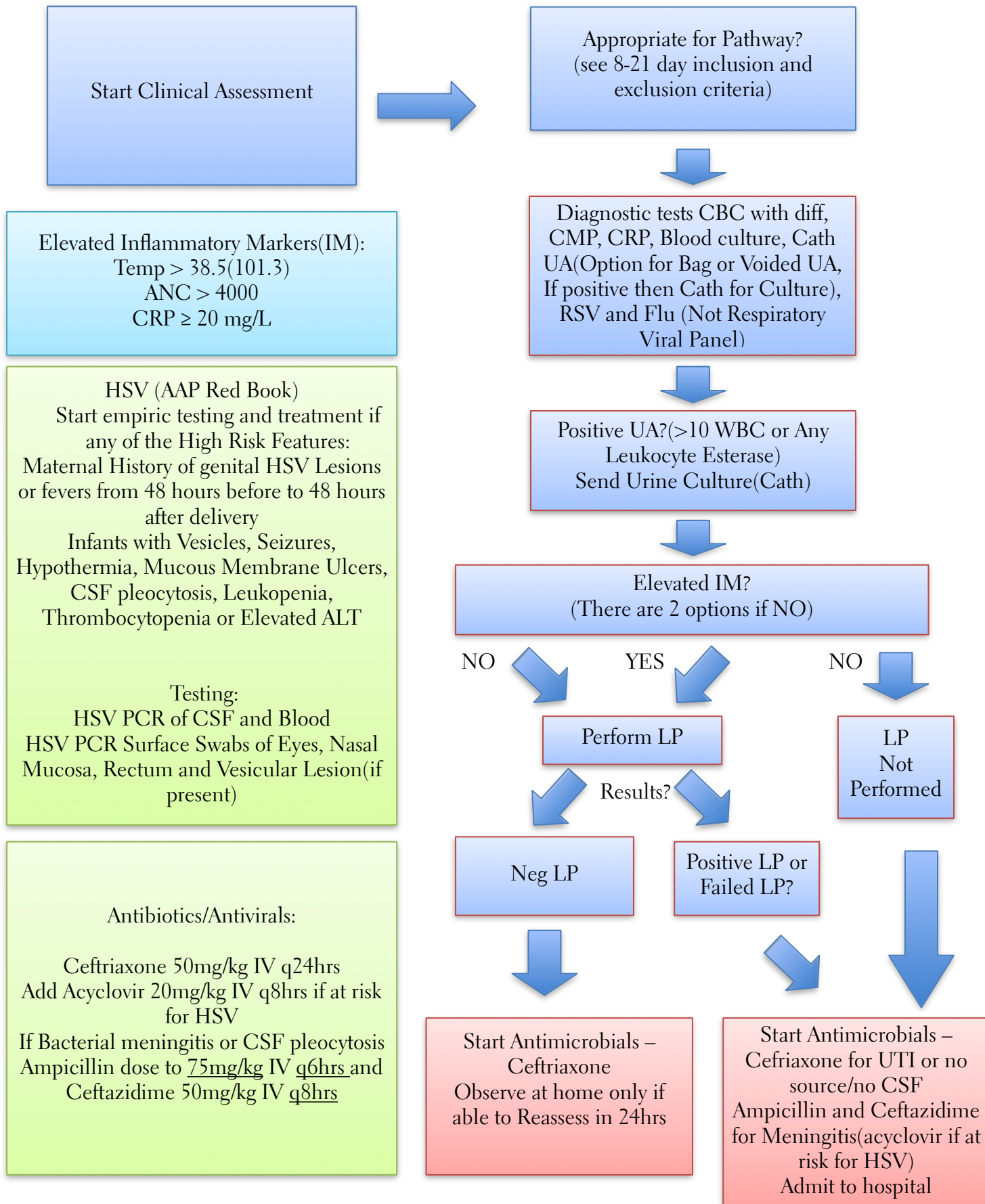
Fever $\geq 100.4^{\circ}\text{F}$ in Neonates 0 to 7 days old



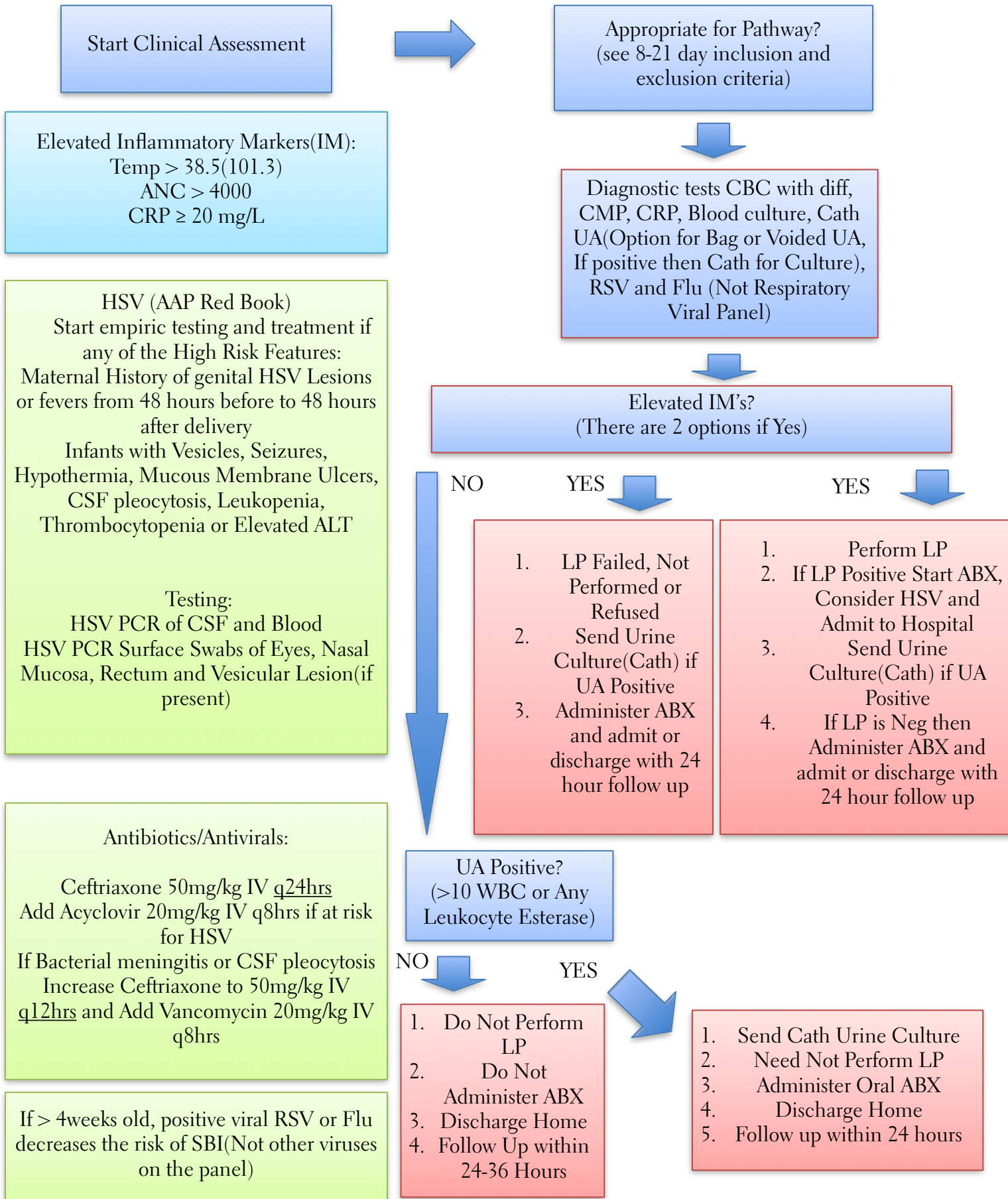
Fever $\geq 100.4^{\circ}\text{F}$ in Neonates 8 - 21 days old



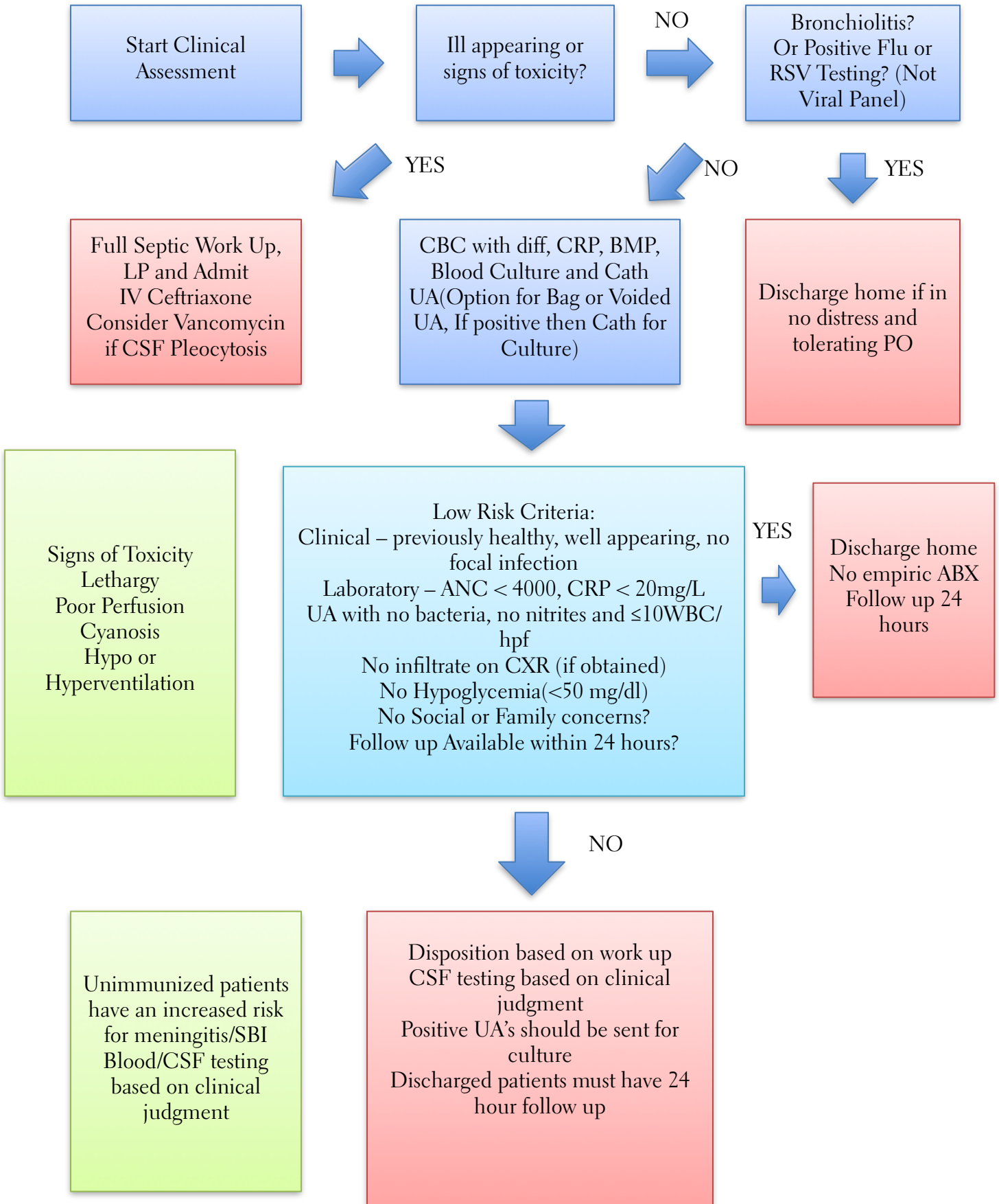
Fever $\geq 100.4^{\circ}\text{F}$ in Neonates 22 - 28 days old



Fever $\geq 100.4^{\circ}\text{F}$ in Infants 29 to 60 days old



Fever $\geq 100.4^{\circ}\text{F}$ in Infants 61 days (2 months) to 120 days (4 months)



Fever ≥ 100.4 in Infants > 4 months to 24 months

